

Thursday, April 28, 2016

REGULAR MEETING

**SONOMA COUNTY AGRICULTURAL PRESERVATION AND OPEN SPACE
DISTRICT ADVISORY COMMITTEE**

Meeting begins at 5:00 p.m.

MEMBERS PLEASE CALL IF UNABLE TO ATTEND

AGENDA

1. **Public Comment** - Comments on items not listed on the agenda
(*Time is limited to 3 minutes per person/item*)
2. **Approval of Minutes** [Attachment "A"] **ACTION**
March 24, 2015
3. **General Manager's Report** **INFORMATIONAL**
4. **Sub-Committee Report Outs** **INFORMATIONAL**
5. **Youth Members: Update on Recruitment Process** [Attachment "B"] **INFORMATIONAL**
Karen Gaffney, Conservation Planning Program Manager
6. **Community Relations Update** **INFORMATIONAL**
Amy Ricard, Community Relations Specialist
7. **Upper Mark West Creek Salmonid Habitat Enhancement Project** [Attachment "C"] **INFORMATIONAL**
Sheri Emerson, Stewardship Program Manager
8. **Projects in Negotiation** [Attachment "D"] **INFORMATIONAL**
9. **Announcements from Advisory Committee Members** **INFORMATIONAL**
10. **Adjournment** Next Meeting: May 26, 2016

PUBLIC COMMENT:

Any member of the audience desiring to address the Committee on a matter on the agenda will have an opportunity to speak. In order that all interested parties have an opportunity to speak, please be brief and limit your comments to the subject under discussion. Each person is usually granted 3 minutes to speak; time limitations are at the discretion of the Chair.

Future Meeting Topics
(subject to change)

5/26/16

Legislative

Spotlight: Comprehensive Plan – (or CATC, RCPP)

Farm & Nature Center Update

6/23/16

Field Trip: TBD Ag Property Easement

7/28/16

Summer Break

8/25/16

Comprehensive Plan Update & Discussion

DISABLED ACCOMMODATION: If you have a disability which requires the agenda materials to be in an alternative format or requires an interpreter or other person to assist you while attending this meeting, please contact Mariah Robson at (707) 565-7363, at least 72 hours prior to the meeting to ensure arrangements for accommodation.



Attachment "A"

***SONOMA COUNTY AGRICULTURAL PRESERVATION AND OPEN SPACE
DISTRICT ADVISORY COMMITTEE***

March 24, 2016 MINUTES

5:07 pm Meeting convened at the District office, 747 Mendocino Avenue,
Suite 100, Santa Rosa, California

Members Present

Cary Fargo	Bill Smith	Doug Lipton	Gary Wysocky
Jan McFarland	John Nagle	Kristin Thigpen	
John Dell'Osso	Don McEnhill	Jeffrey Holtzman	

Members Absent

Laurie Gallian	Sue Conley	
John Azevedo	Steve Rabinowitsh	Curt Nichols

Staff Present

Bill Keene, General Manager; Jennifer Kuszmar, Matching Grant Coordinator; Lisa Pheatt, County Counsel; Mariah Robson, Advisory Committee Clerk

Kristin Thigpen, standing in as Chair for Steve Rabinowitsh, called the meeting to order at 5:07 pm.

Public Comment

No public comment on items not on agenda.

Approval of Minutes

The minutes of January 28, 2016 were approved as submitted.

General Manager's Report

- The RCPP Grant will be taken to the Board on March 29, 2016.
- The Conservation Easement Workshop will be taken to the Board on April 19, 2016. The purpose of this workshop is to provide the Board with an overview of conservation easements as the District's primary land conservation tool, the value of the easements and how they are structured. The easement workshop was a recommendation of the 2014 Management Review..

- A Land Acquisition Services contract is going to the Board on April 26, 2016. This is a contract with consultants to help with land transfers to Regional Parks.
- Karen Gaffney, Conservation Planning Program Manager, is bringing the Conservation Planning Update to the Board on May 24, 2016.
- Mr. Keene would like to let the Committee members know of a possible mitigation proposal for the Estero Ranch, at the mouth of the Estero Americano, owned and managed by Wildlands Conservancy with a District conservation easement over it. There are two drainages at the mouth of the Estero that are eroding away and creating extensive gullying and the silt is being deposited into the Estero. CalTrans is working on a bridge replacement at the Highway 1 crossing to raise it due to flooding and is looking for a nearby site to mitigate for impacts to wetland and riparian habitat and has identified the Estero Ranch property as the preferred option at this point. There will be a presentation next month at the Advisory Committee and Dan York, Director of Wildlands Conservancy, will be here in person to answer questions and get input from the Advisory Committee.
- The District's proposed site for The Incubator Farm Project, on the Young-Armos property in Rohnert Park, is controversial. Some of the neighbors would prefer the project not take place on this site. District staff is working with the City of Rohnert Park and the neighbors. Mr. Keene made a presentation at the Rohnert Park City Council on Tuesday, March 22. . District staff is going to continue to engage with the community and work with City Council.
- On March 6, 2016, OpenRoad with Doug McConnell aired an episode featuring the District. Cooley Ranch, Windsor Town Green and Jenner Headlands were highlighted. You can view the piece on our website at www.sonomaopenspace.org/projects/openroad.
- The District sponsored the Artisanal Cheese Festival this past weekend and had a booth at the event. The event was a great opportunity to talk about the District's work in general, and how it relates to artisanal cheese and local food production specifically.
- Amy Ricard, Community Relations Specialist, is working on an insert in the Press Democrat and North Bay Business Journal that profiles six farmers, ranchers and grape growers practicing exemplary stewardship on their land. The insert will be published the week of April 18, 2016 about a week ahead of the next Advisory Committee meeting.

Sub-committee Report Outs

John Nagle reported out for the Ag Subcommittee meeting that took place at 4:00 today:

- Mr. Keene gave a short presentation about the Incubator Farm Project on the possible Young-Armos site.
- Members discussed issues for ag funding with RCPP timeline being moved up so quickly
- Members defined ag elements that they would like to be informed about.

RCPP Grant

Mr. Keene gave a brief presentation on the Regional Conservation Partnership Program five year grant that was awarded to the District and partners including the Water Agency, two local Resource Conservation Districts, the Pepperwood Foundation and thirty others. The District and partners applied for \$10 million and received \$8 million; 80% of the original request. The District is the lead and the focus will be on collaborative, incentive based conservation with an emphasis on win: win

outcomes for agriculture and natural resources. The geographic focus is on agricultural areas with a high priority on groundwater basins and riparian corridors. The goal is to use easements and conservation plans to maintain water quality and biodiversity while supporting long term agricultural viability. Approximately \$5 million will go to the District. The District will work with partners over the next six months to develop priorities and ranking criteria. The Advisory Committee will be updated as the projects unfold.

Matching Grant Program Subcommittee

Jennifer Kuszmar, Matching Grant Coordinator, presented a Matching Grant Program overview and update before creating and finalizing the subcommittee.

The goal of the program is to protect land within or near urban areas. Local government, county, city and non-profits bring their projects to the District. The program accepts new applications every two years. In 2014, the program accepted urban open space projects totaling \$2.5 million into the program. Some examples of Matching Grant Program projects include the Roseland Village Public Space, the Sebastopol Skategarden and the Moorland Neighborhood Park, recently renamed Andy's Unity Park.

In 2016, we have the same amount budgeted as awarded in 2014, \$2.5 million. Tonight a Matching Grant Subcommittee will be created. The Subcommittee roles include reviewing the applications, attending one or two subcommittee meetings, evaluating the projects and recommending projects for funding. Much of the work is done via email or phone.

Chair Thigpen asked for volunteers for the subcommittee: Bill Smith, Jeffrey Holtzman, John Dell'Osso volunteered, and Sue Conley, who was not present at the meeting, had shown interest before the meeting. They will be joined by two Fiscal Oversight Commissioners, Jeff Owen and Dee Swanhuysen.

Don McEnhill motioned and John Nagle seconded the motion. Chair Thigpen asked for a vote, all were in favor.

Projects in Negotiations

Sonoma Raceway is going to the Board on March 29, 2016 to have three easements recorded.

Announcements From Advisory Committee Members

John Dell'Osso

It is the National Park Service Centennial this year and Mr. Dell'Osso will be working with REI, the official partner of the National Park Service's centennial celebration. He will be at the Corte Madera REI on April 16th.

There will be an Urban Growth Boundary public meeting and workshop on April 11, 2016 being hosted by the City of Cotati. The session will take place at Cotati City Hall at 201 West Sierra Ave.

Kristin Thigpen

On April 4th and 5th UC Davis is holding a Water Conference called Climate Change, Water, and Society IGERT. The keynote speaker will be Kevin de Leon, President Pro Tempore of the California Senate.

Bill Keene

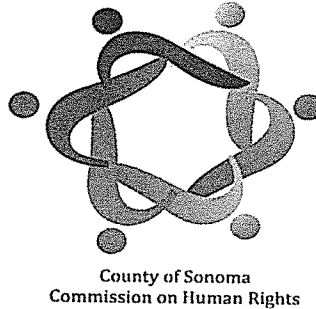
Fourth graders will be allowed into the National Parks for free. They need to go online and answer two or three questions and then are issued a card that allows them free access. This applies to children about to go into 4th grade or who have just gone into 5th grade. It is part of program called Every Kid in the Park launched by President Obama in partnership with the Federal Land Management.

Adjournment: 6:19 pm

Next scheduled meeting date: April 28, 2016

Respectfully submitted,

Mariah Robson,
Advisory Committee Secretary



MEMORANDUM

TO: Sonoma County High School Administrators/Principals/Counselors/Social Science Teachers

FROM: Dmitra Smith, Tracy Cunha
Sonoma County Commission on Human Rights

DATE: March 25, 2016

RE: Invitation to High School Aged Students for the Junior Commissioner Project

The County of Sonoma Commission on Human Rights is seeking applicants for the Junior Commissioner Project for the 2016-2017 school year.

In 2008, the Commission on Human Rights began to develop the Junior Commission on Human Rights as a means to engage high school youth ages 14 to 18 in education and activism around human rights issues within Sonoma County, as well as an opportunity to foster leadership skills by educating their peers and creating ad hoc committees of their own design. The 2013-2014 inaugural year of this project served as a powerful learning experience for high school students regarding issues of human rights in their County. It further encouraged young students in the County to become active participants in their community, allowed them to engage with elected officials and human rights organizations, and provided a vehicle by which County Supervisors are able to learn about current concerns and issues relating to youth and human rights in Sonoma County.

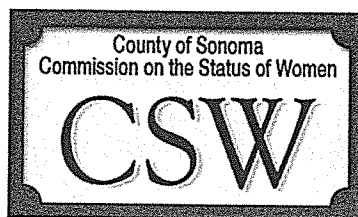
Ad hoc topics over the past two terms have included: LGBTQI rights – starting Gay Alliance Clubs at schools; exposing the cruelty of *slut-shaming* – filming a PSA; people with disabilities – fundraised and produced “Big Blue Boxes” to provide families with children with disabilities; food insecurity and poverty; homelessness.

Last year the Junior Commissioners participated in a range of workshops, engaged in a youth session with other youth human rights activists from around the Bay Area, and heard featured speakers Congresswoman Jackie Speier and State Assemblyman Tom Ammiano while attending the statewide California Association of Human Relations Organizations (CAHO) in San Francisco.

Please support this project by referring young people who would benefit from this program, and by forwarding this information to faculty of students who might be interested in this project.

The Commission is particularly interested in encouraging diversity and is actively seeking youth who could help us broaden participation in this project.

Junior Commissioner Project information and application is attached. Deadline for applications is May 1, 2016. For further information on the Junior Commission program, please contact Deputy Clerk Tracy Cunha at 707.565.2821 or CHR@Sonoma-County.org. For more information about the County of Sonoma Commission on Human Rights, please visit our website at <http://www.sonomacountychr.org> or our Facebook page at [CHR Facebook](#).



MEMORANDUM

TO: Sonoma County High School Social Science Teachers/Principals/Administrators

FROM: Regina De La Cruz, Chair
County of Sonoma Commission on the Status of Women

DATE: March 25, 2016

RE: Invitation to High School Aged Students for the Junior Commissioner Project

The County of Sonoma Commission on the Status of Women is seeking applicants for the Junior Commissioner Project for 2016-2017 – the term runs concurrent with the school year from August through May.

In 1994 the Commission on the Status of Women developed the Junior Commissioner Project as a mentorship program to provide high school youth age 14 to 18 with an introduction to County government, as well as an opportunity to enhance leadership skills by observing women leaders in our community. This nationally recognized project serves as a learning experience for these students regarding issues of women's equity and the need for all women and girls to foster skills for independence and success in a changing global community. It further encourages young students in the County to become active participants in their local communities, teaches the importance of developing a voice with which to advocate, and provides a vehicle by which County Supervisors are able to learn about current concerns and issues of young women in Sonoma County.

Junior Commissioners attend monthly meetings where they learn parliamentary procedure, develop team-building skills, and work collaboratively on projects that give back to their communities. The Junior Commissioners act as liaisons at the regular monthly meetings of the Commission on the Status of Women (CSW) and provide the adult commission with a youthful perspective on issues and matters of interest to the CSW. The Juniors also reach out to peers, teachers and counselors in their respected high schools to bring awareness about this project and to get other youth involved in community service.

Recent issues and activities taken up by the Junior Commission include: Girls In Code – providing support for girls in the STEM fields; the damaging culture of rape; inequity in politics; human trafficking; and body positivity for women and girls. For community service projects, the commissioners have previously rehabilitated and furnished rooms at women's safe houses. Most recently, members visited local assisted living facilities and worked with residents, teaching basic emails skills and setting up Facebook pages to facilitate communication with their families.

Please support this project by referring young people who would benefit from this program, and by forwarding this information to faculty of students who might be interested in this project.

The Commission is particularly interested in encouraging diversity and is actively seeking youth who could help us broaden participation in this project.

Junior Commissioner Project information and application is attached. Deadline for applications is May 1, 2016. For further information on the Junior Commission program, please contact Deputy Clerk Tracy Cunha at 707.565.2821 or CSW@Sonoma-County.org. For more information about the County of Sonoma Commission on the Status of Women, please visit our website at <http://www.sococsw.org> or our Facebook page at [CSW Facebook](#).



Please email, mail or fax completed applications to:

Beth Dadko

beth.dadko@sonoma-county.org

490 Mendocino Avenue, Suite 101

Santa Rosa, CA 95401

Phone: 565-6681 Fax: 565-6619

Youth Membership Opportunities for Sonoma County

Use your voice, be heard, and make a big difference!

What organizations are recruiting for Youth Members at this moment?

Many boards, councils, and other groups are interested in youth members, including:

- Health Action Council
- Upstream Investments
- Health Action Cradle to Career Initiative (Ages 18-24)
- Health Action Committee for Healthcare Improvement (Ages 18-24)
- RRARA (Russian River Area Resources and Advocates), a Health Action Chapter
- CHIPA (Community Health Initiatives in the Petaluma Area), a Health Action Chapter
- Sonoma County Prevention Partnership (Alcohol, Tobacco, and Other Drug Prevention)
- Food System Alliance
- Sonoma Environmental Education Collaborative (SEEC)
- Keeping Kids in School (KKIS)
- Agricultural and Open Space District Advisory Committee
- Sonoma County Parks and Recreation Advisory Commission (PRAC)

What are the responsibilities and qualifications required of the youth members?

Young people interested in being an official youth member should:

- Live **or** attend school in Sonoma County and be between the ages of 16-24 years old
- Serve a one year term from August 2016 through June 2017
- Participate in a new member orientation during the summer 2016
- Attend regular meetings (varies from four times a year to monthly, depending on the group)
- Participate on a subcommittee or workgroup
- Contribute your input and perspective to the general group and subcommittee/workgroup
- Work closely with an adult ally that is a current group member
- Share news and information with your school and community
- Optional: complete a project educating your peers about issues that impact their lives

What are some of the benefits and incentives for participating?

This is a great opportunity if you want to make a difference. Other benefits could include:

- Earn a monetary award up to \$200/term
- Earn community service credit required by many high schools and colleges
- Develop your leadership skills and get involved in Sonoma County government
- Explore new career opportunities
- Learn about issues affecting your community and how you can take action
- Develop strong peer relationships with adults, including a mentorship with an adult ally
- Meet new people while having fun!

How do interested young people apply?

For more information and/or an application please visit the Health Action website at

www.sonomahealthaction.org or contact Beth Dadko at (707) 565-6681. **Applications for the 2016-2017 youth membership are due on Monday, May 2, 2016 by 5:00pm.**

Youth Membership Application Information

Thank you for your interest! This is a one-form application to match youth with one of many health-improvement efforts in Sonoma County. Youth involvement is essential in all our efforts, and we hope this joint application is a more effective way to link youth with a variety of opportunities.

Application process and timeline for the 2015-2016 term:

- Please **complete and submit the application packet with two letters of recommendation by Monday, May 2, 2016 by 5:00pm.** (The contents of the application packet include the general application with questions and experience; two letters of recommendation; and signed applicant agreement.) **Sorry...incomplete or late applications will not be accepted.**
- A staff member from the Sonoma County Department of Health Services staff will contact you within two weeks of your application submission to let you know if you are selected for an interview.
- The **interviews will be scheduled and conducted by Friday, May 20, 2016.** You will be interviewed by a committee of 3-4 people including organization staff and/or members and a young person participating on another board, council, or group.
- The interview committee will make their recommendations to the participating organizations. Ultimately, the youth members are appointed to the board, council, or group.
- Selections will be made and **you will be notified by Friday, May 27, 2016, about the status of your participation. If you are selected for youth membership, your official appointment will be approved by the group at its subsequent meeting.**
- If you are not selected for youth membership in this term after being interviewed, you will be invited to reapply when a youth membership seat opens, if you are still eligible. You will also be referred to other youth leadership opportunities within the County based on your interests.
- If you are invited to participate, a date will be scheduled for **orientation and training.**

Submit your completed applications by Monday May 2, 2016 to:

Department of Health Services
Attention: Beth Dadko
Mail: 490 Mendocino Ave., Suite 101, Santa Rosa, CA, 95401
Email: beth.dadko@sonoma-county.org
Fax: (707) 565-6681

Youth Membership Application

General Information

Name:	First	Middle	Last
Address:	Street	City	Zip
Mailing Address: (If different from above.)			
Home Phone:		Cell Phone:	
Email Address:			
Birthday:		Age:	
School or Youth Organization:		Year in School:	

Emergency Contact Information

Parent/Guardian Name:	Relationship:	Phone:
Alternative Contact Name:	Relationship:	Phone:

Topical Interest Areas

<p>Please rank your interest areas from 1-12, with 1 being your top choice and 12 being your last (please see pages 9-11 for descriptions):</p>		
Health Action Council _____	Upstream Investments _____	Cradle to Career _____
Committee for Healthcare Improvement _____	Food System Alliance _____	
Prevention Partnership _____	RRARA _____	CHIPA _____
Sonoma Environmental Education Collaborative _____	Keeping Kids in School _____	
Ag and Open Space District _____	Parks and Recreation Advisory Commission _____	

Experience and Desired Experience

Please indicate if you have experience and/or if you would like experience in the following areas (you may check both boxes if it applies):

	Have Experience	Would Like Experience
Meeting Facilitation		
Policy Development or Advocacy		
Public Speaking		
Job Shadowing		
Research or Data Analysis		
Project-Based Learning		

Applicant Agreement and Signatures

I understand the responsibilities required of youth members. If selected, I pledge to attend all meetings, complete a project, and participate as an active team member.

Youth Signature: _____

Date: _____

(For youth under 18 years old) As a parent/guardian, I have read through the information about youth membership and support my child in applying for this opportunity.

Parent/Guardian Signature: _____

Date: _____



Please email, mail or fax completed applications to:

Beth Dadko

beth.dadko@sonoma-county.org

490 Mendocino Avenue, Suite 101

Santa Rosa, CA 95401

Phone: 565-6681 Fax: 565-6619

Youth Membership Application Questions

We would like to know more about you and your interests. Please tell us about yourself! On a separate piece of paper, briefly answer the following questions:

1. Describe yourself. What are your talents, skills, and interests?

2. What communities do you feel connected to? *(Examples: Disabled, Homeless, Teen Parent, GLBTQI, Low-Income, Immigrant. Remember, you are not limited to these choices. Feel free to add your own.)*

3. Why are you interested in being a youth member in Sonoma County? What unique perspectives will you bring to an organization?

4. What would be your goal as youth member?

5. How did you hear about this youth membership opportunity?



Please email, mail or fax completed applications to:

Beth Dadko

beth.dadko@sonoma-county.org

490 Mendocino Avenue, Suite 101

Santa Rosa, CA 95401

Phone: 565-6681 Fax: 565-6619

Relevant Leadership Experience and Community Service

Please provide a brief summary of your experience and accomplishments as it relates to your ability to serve on a coalition or board (examples of leadership opportunities where you have displayed your ability to serve on a committee, effectively communicate in large groups, work on a team, etc.).

Organization and Contact Name	Dates Served	Work Completed



Please email, mail or fax completed applications to:

Beth Dadko

beth.dadko@sonoma-county.org

490 Mendocino Avenue, Suite 101

Santa Rosa, CA 95401

Phone: 565-6681 Fax: 565-6619

Letter of Recommendation

Please answer the following questions about the youth listed below. Feel free to use a separate sheet of paper, and please sign the sheet once completed. Your letter will not be shared with the youth applicant. Thank you very much!

Name of the youth you are referring: _____

How long have you known them and in what capacity?

What are the unique skills and talents that you feel this young person has to bring to a group?

In what area(s) does this youth need support or have a need for growth?

How would you describe this youth's attendance and reliability?

Other comments:

Name/Signature: _____ **Date:** _____



Please email, mail or fax completed applications to:

Beth Dadko

beth.dadko@sonoma-county.org

490 Mendocino Avenue, Suite 101

Santa Rosa, CA 95401

Phone: 565-6681 Fax: 565-6619

Letter of Recommendation

Please answer the following questions about the youth listed below. Feel free to use a separate sheet of paper, and please sign the sheet once completed. Your letter will not be shared with the youth applicant. Thank you very much!

Name of the youth you are referring: _____

How long have you known them and in what capacity?

What are the unique skills and talents that you feel this young person has to bring to a group?

In what area(s) does this youth need support or have a need for growth?

How would you describe this youth's attendance and reliability?

Other comments:

Name/Signature: _____ **Date:** _____

Youth Membership Opportunities

Health Action Council

In August 2007, the Sonoma County Board of Supervisors authorized the Department of Health Services to convene a health action council (now called "Health Action") to work on improving health and health care for all Sonoma County residents. Health Action's over-arching mission is community health improvement. Health Action developed a shared community vision that Sonoma County is the healthiest county in California by the year 2020 and developed 10 broad goals and a set of indicators to measure success. In 2012, Health Action prioritized focus areas in health care, education, and income as part of its [2013-2016 Action Plan](#). Currently, the Council of about 50 community leaders from all sectors of the community including city government, the local health care system, non-profits, businesses, education, and community members helps work the plan through strategy, stewardship and sustainable financing. Please see the Health Action website for more information: www.sonomahealthaction.org/

Upstream Investments

The Upstream Investments initiative promotes community-wide investments that cultivate a county where poverty is eliminated and all residents have equal opportunity for quality education and good health in nurturing home and community environments. The Upstream Policy Committee is a Board sanctioned committee comprised of community members that champion preventative practices and policies that are proven to bring lasting change. Please see the Upstream Investments website for more information: www.upstreaminvestments.org/

Cradle to Career

Cradle to Career Sonoma County is a historic partnership that connects all segments of the educational continuum--early childhood, K-12, college/technical training, careers--with broad community support to improve the educational, economic, and health outcomes for all Sonoma County youth. Students who get off to a strong educational start are more likely to graduate from high school, earn more money over their lifetime, have better health outcomes, and are better able to contribute to the economic, social and cultural life of the community. Cradle to Career engages community partners to coordinate and align the education efforts and resources in Sonoma County to ensure that all of our youth are prepared to succeed. Please see the Cradle to Career website for more information: www.c2csonomacounty.org/

Committee for Health Care Improvement (CHI)

In December 2011, Health Action convened CHI to address Health Action's goal ten: Connect all residents with a trusted source of prevention-focused primary care that coordinates patient care across the continuum of health care and community-based services. CHI's vision is healthcare that works well for all. CHI is coalition of healthcare providers and key community stakeholders united to achieve access to high-value, integrated, patient-centered care for all Sonoma County residents. CHI is currently working on the following initiatives: Hearts of Sonoma County (high blood pressure/hypertension prevention and care), My Care My Plan (end of life care), and Opioid Prescribing to Reduce Misuse and Abuse. Please see the CHI website for more information: www.sonomahealthaction.org/health-system-improvement

Food System Alliance

The Sonoma County Food System Alliance (FSA) is a county-based coalition of diverse stakeholders working collaboratively to envision, advocate for and create a vibrant local food system. We envision a system in which local growers and processors are economically viable, the physical environment is maintained, and consumers have access to healthy, affordable food. Convened through a partnership between Ag Innovations Network and the County of Sonoma in 2009, the FSA is a powerful forum to confront and resolve local food system issues by identifying and implementing key strategies that lead to effective action. Please see the Food System Alliance website for more information:

sonomacofsa.org/

Russian River Area Resources and Advocate (RRARA)

RRARA is a Health Action Chapter, a local community health improvement group with representation from many sectors of the community including County government, the local health care system, non-profits, businesses, education, and community members. Health Action Chapters initiate and support policy, system, and environmental change on a local level. RRARA's efforts include work on community engagement, early childhood education, supporting tobacco prevention policies, homelessness, and transportation. Please see the RRARA website for more information: www.rrara.org/

Community Health Initiatives in the Petaluma Area (CHIPA)

CHIPA is a Health Action Chapter, a local community health improvement group with representation from many sectors of the community including city government, the local health care system, non-profits, businesses, education, and community members. Health Action Chapters initiate and support policy, system, and environmental change on a local level. CHIPA's priority areas are Cradle to Career, Mental and Behavioral Health, and Wellness and Prevention (focused on Hearts of Sonoma, EBT matching for farmers markets, and healthy aging). CHIPA is also forming an ad hoc policy workgroup to develop guiding policy principles and an advocacy plan. Please see the CHIPA website for more information: www.phcd.org/chipa.php

Sonoma County Prevention Partnership

The Sonoma County Prevention Partnership is a county-wide voluntary collaborative forum for planning and decision-making for the promotion of health policy and advocacy efforts. The Partnership engages stakeholders in a process to increase alcohol, tobacco and other drug (ATOD) policy and advocacy efforts. The Partnership prioritizes issues through regular general meetings and issue specific subcommittees (alcohol, marijuana, prescription drugs, and tobacco), and provides direction 1) to support and inform the community regarding alcohol, tobacco, and other drug policies; 2) to advocate for local, statewide, and national policies to promote health and decrease the community burden of ATOD; and 3) to build collaborative relationships with community groups and initiatives that support the Partnership mission. For more information, please see the Prevention Partnership webpage:

www.sonoma-county.org/health/about/pdf/preventionpartnership.pdf

Sonoma Environmental Education Collaborative (SEEC)

SEEC creates vibrant, innovative collaborations that increase environmental literacy in Sonoma County citizens. SEEC identifies and addresses regional needs for environmental education beyond the scope of individual organizations. Our work identifies gaps in existing resources and activities, considers how existing resources can be better leveraged to achieve common goals, and seeks new resources for collaborative projects that enhance existing infrastructure and programs. For more information, please see the SEEC webpage: www.sonomaecologycenter.org/seec

Keeping Kids in School (KKIS)

In December 2013, A Sonoma County team, led by Sonoma County's Presiding Juvenile Court Judge Virginia Marcoida, attended a Summit on "Keeping Kids in School and Out of Court Day" in Anaheim, CA. The group was inspired to form a local initiative to address truancy in Sonoma County including all key stakeholders. The group began meeting in February 2014, and meets monthly to collaborate, share best practices, and serve as the steering committee for the Sonoma County Probation Department's three-year Keeping Kids in School grant.

Agricultural and Open Space District Advisory Committee

Sonoma County Agricultural Preservation and Open Space District was created by the visionary voters of Sonoma County in 1990 to protect the County's farmland, scenic open space, clean water and natural areas for the benefit of its residents now and for future generations. The District is funded by a voter approved quarter-cent sales tax through 2031. As one of the first organizations in the country established to protect both agricultural and open space lands, the District has protected over 106,000 acres to benefit natural and human communities. The District's Advisory Committee is comprised of 17 members representing agriculture, the environment, local government, real estate, and business. The Advisory Committee reviews and provides input on all elements of the District's work – including land acquisition, stewardship, planning, education, and community relations. The District is seeking youth representation on its Advisory Committee to ensure that we are reflecting the diversity of our community and to engage the next generation in land conservation. Please see the District's website for more information: www.sonomaopenspace.org

Sonoma County Parks and Recreation Advisory Commission (PRAC)

The Sonoma County Parks and Recreation Advisory Commission was established in 1991 to advise the Board of Supervisors. The Commission's role is to promote and encourage public recreation, study park issues, and make recommendations to the Board and Regional Parks Department about the maintenance, development, and operation of recreational area and facilities serving Sonoma County residents. Please see the Sonoma County Regional Parks website for more information: http://parks.sonomacounty.ca.gov/About_Us/Public_Meetings.aspx



**Do you value health, equity, and collaborating with others?
Are you passionate about creating meaningful change in your community?
Join us in making Sonoma County a healthy place to live, work, and play...a
place where people thrive and achieve their life potential!**

Many health improvement coalitions need youth involvement in order to succeed and are committed to increasing youth civic engagement. **The following groups are currently inviting Sonoma County youth between the ages of 16-24 to apply for youth membership:**

- Health Action Council
- Upstream Investments
- Health Action Cradle to Career Initiative (Ages 18-24)
- Health Action Committee for Healthcare Improvement (Ages 18-24)
- RRARA (Russian River Area Resources and Advocates), a Health Action Chapter
- CHIPA (Community Health Initiatives in the Petaluma Area), a Health Action Chapter
- Sonoma County Prevention Partnership (Alcohol, Tobacco, and Other Drug Prevention)
- Sonoma County Food System Alliance
- Sonoma Environmental Education Collaborative (SEEC)
- Keeping Kids in School (KKIS)
- Ag and Open Space District Advisory Committee
- Sonoma County Parks and Recreation Advisory Commission (PRAC)

We are working collectively improve the health of all Sonoma County residents by addressing key social, economic, and environmental factors that affect everyone's health, support healthy behaviors and lifestyles, and make sure everyone has access to quality health care and social services. Multiple youth will be selected to serve on each of these coalitions for one-year terms.

We encourage you to distribute the attached information to youth that have an interest in furthering their own leadership development and helping to increase the community's health outcomes. Please see the application with further details about the benefits, incentives and responsibilities for young people interested in participating. **The due date is May 2, 2016.**

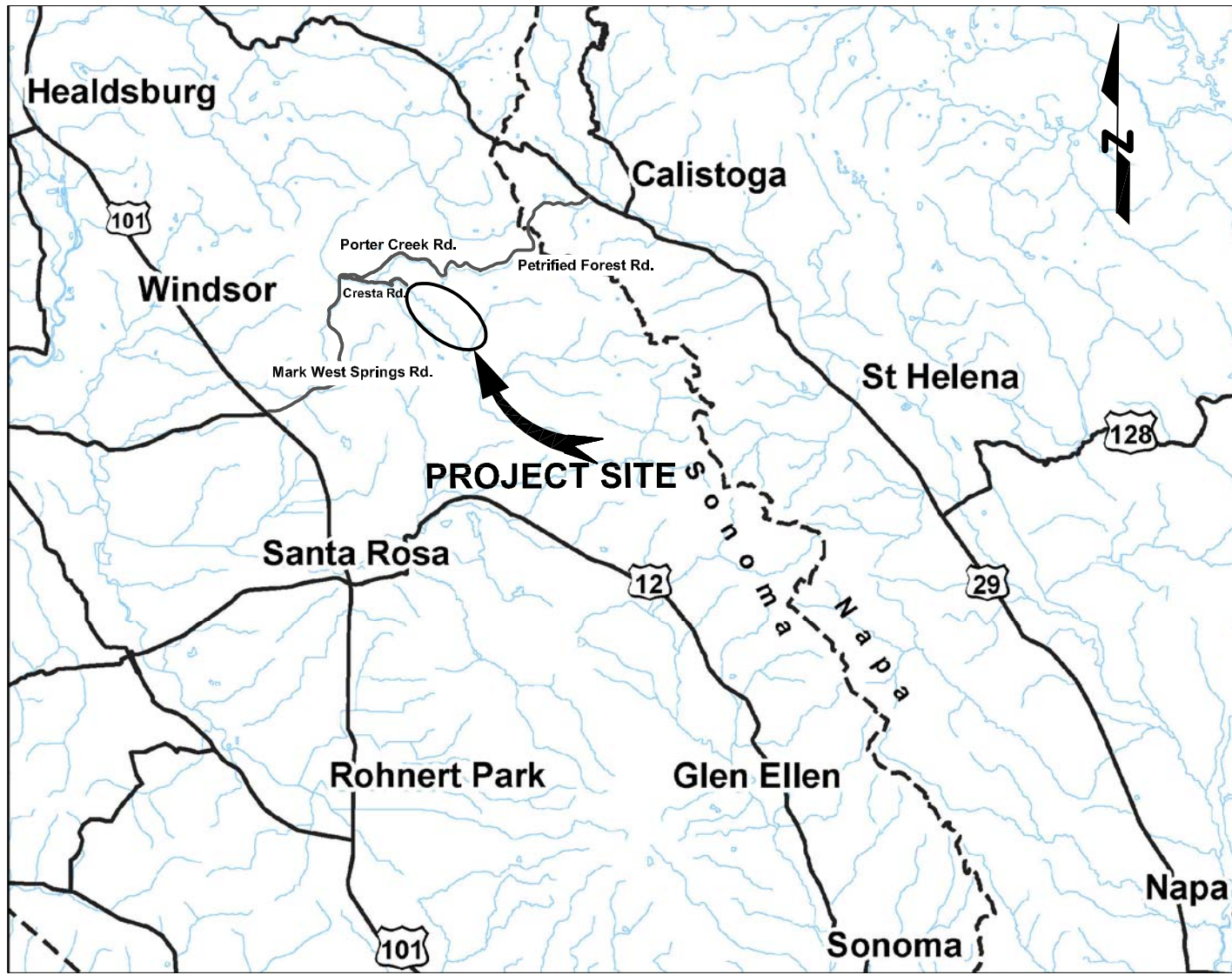
If you need additional information, please call (707) 565-6681 or visit <http://www.sonomahealthaction.org/youthmembership>. Thank you in advance for your support.

Regards,

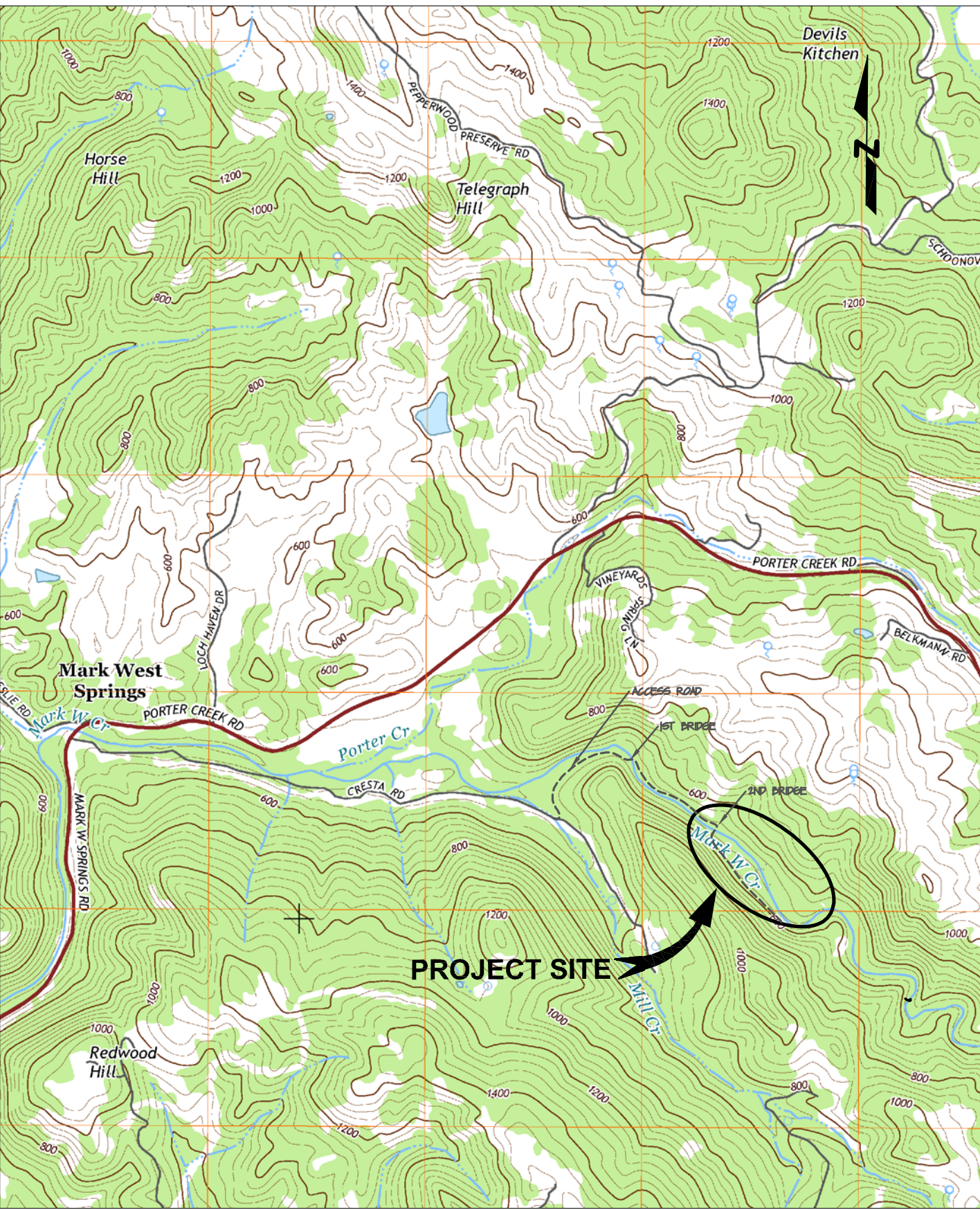
Beth Dadko, Health Action Community Engagement Coordinator, Beth.Dadko@sonoma-county.org

Acad File Name: G:\Acad Dwg\03\Mark West Creek\Drawings\T1S.dwg
Plot Date: 3/31/2016 3:44 PM Layout: TITLESHEET

Attachment "C"



VICINITY MAP
SCALE: AS SHOWN

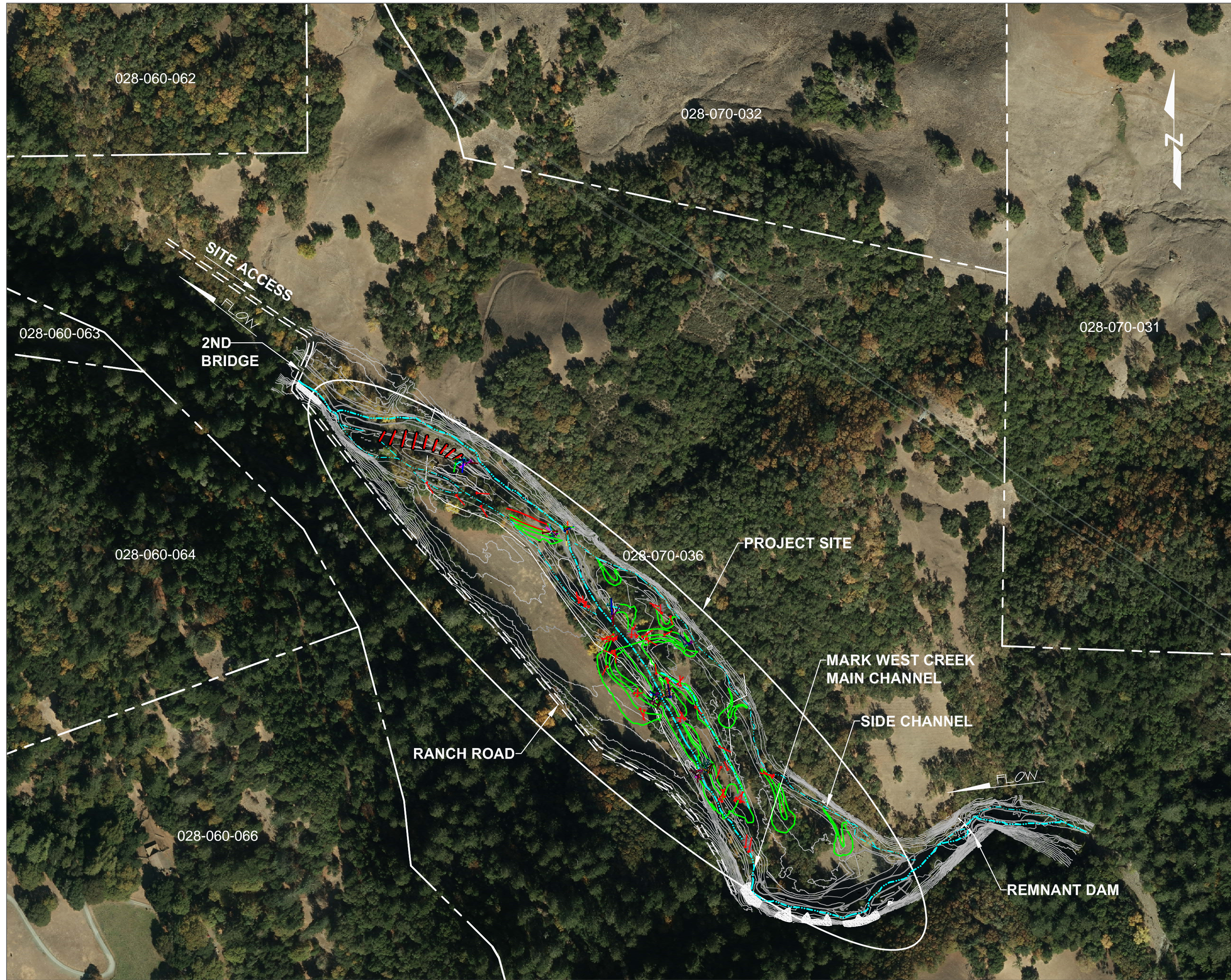


LOCATION MAP
SCALE: 1" = 2000'
USGS

PROJECT ADDRESS: SITE ACCESS VIA CRESTA RD.
OFF OF MARK WEST SPRINGS RD./PORTER CREEK RD.

UPPER MARK WEST CREEK SALMONID HABITAT ENHANCEMENT PROJECT

PREPARED FOR
SONOMA COUNTY AGRICULTURAL PRESERVATION AND OPEN SPACE DISTRICT
IN PARTNERSHIP WITH
NATIONAL OCEANIC ATMOSPHERIC ADMINISTRATION
AND
SONOMA COUNTY WATER AGENCY



SITE LAYOUT
SCALE: 1" = 200'



Sheet List Table			
Sheet Number	Sheet Title	Revision 1	Revision 2
1	TITLE SHEET		
2	CONSTRUCTION NOTES		
3	EROSION CONTROL NOTES & DETAILS		
4	SITE PLAN		
5	DEWATER & SITE ACCESS PLAN		
6	21+50-28+50 PLAN & PROFILE		
7	16+00-21+50 PLAN & PROFILE		
8	10+50-17+00 PLAN & PROFILE		
9	CROSS SECTIONS		
10	CROSS SECTIONS		
11	SPOILS PLAN		
12	ELJ SCHEMATICS		
13	LWS SCHEMATICS		
14	CONSTRUCTION DETAILS		
15	CONSTRUCTION DETAILS		
16	REVEGETATION PLAN		
17	REVEGETATION DETAILS		
18	REVEGETATION NOTES		

APPROXIMATE CONSTRUCTION QUANTITIES
Total Cut to Finish Grade = 7,029 CY
Total Fill to Finish Grade = 7,029 CY
Total Project Cut = 9,400 CY (including over-ex for topsoil and rock ballast)
Total Project Fill = 9,400 CY (including replacement of topsoil and displaced soil)
Rock Ballast Import = 437 Tons
Total Project Area = 4.8 AC
Total Disturbed Area = 6.9 AC

CONSTRUCTION QUANTITY NOTES:
1. Construction quantities shown are approximate. Contractor is responsible for determining proper earthwork, rock, and material quantities. See Cut Fill Report sheet 4 for quantity details by project area.

SURVEY NOTES
Topographic ground survey performed by PCI, June 2015. Surrounding topographic lidar data obtained from NOAA and is approximate only.

Horizontal datum: NAD83 California State Plane (Zone 2)
Vertical Datum: NAVD 1988

Horizontal and vertical control as shown

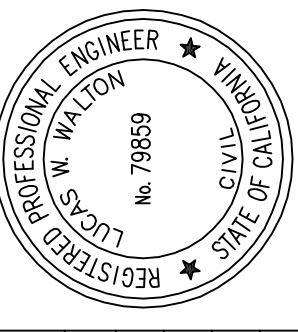
Project location: Lat: 38°32'37.8"N Long: 122°41'03.2"W

DRAFT
FOR REVIEW

VERIFY SCALES
ONE INCH



PREPARED FOR:
SONOMA COUNTY AGRICULTURE
PRESERVATION & OPEN SPACE DISTRICT



DATE: 3/31/16
SCALE: AS SHOWN
MAPPING BY: JP
DESIGNED BY: MJL/HW
DRAFTED BY: LW/JRH
CHECKED BY: MJ

UPPER MARK WEST CREEK
SALMONID HABITAT ENHANCEMENT PROJECT
TITLE SHEET

SHEET
1
OF 18

PROJECT	Acreage (approximate)	Supervisory District	Acquisition Plan Category	Project Design	Appraisal Process	Approvals/Baseline	Escrow	Comments
Arrowhead-Maas Ranch	245	2	Farms & Ranches	x				CE under negotiation
Bettinelli Dairy	300	2	Farms & Ranches					On hold at request of owner
Buttke Dairy	253	2	Farms & Ranches					On hold at request of owner
Cresta III	46	1	Recreation & Education	x	x			On hold at request of owner
Donnell	909	1	Greenbelts & Scenic Hillside	x				CE under negotiation
Fitch Mountain (Acq P2)	26	4	Recreation & Education	x	x	x		Under contract
Foppiano Vineyards	160	4	Greenbelts & Scenic Hillside	x	x			Fiscal Oversight Commission reviewed 3/5/15
Glenn Ranch	230	2	Farms & Ranches	x	x			On hold at request of owner
Gloeckner-Turner Ranch	3,364	5	Water, Wildlife & Natural Areas	x				On hold at request of owner
Hansen Ranch	330	2	Farms & Ranches	x	x			Appraisal under review
Howlett Forest	1,395	5	Water, Wildlife & Natural Areas	x	x			Appraisal underway
LaFranchi	1,189	4	Farms & Ranches	x				On hold at request of owner
Lafranconi	211	5	Greenbelts & Scenic Hillside	x				CE under negotiation
Madeline Poncia Trust	175	2	Greenbelts & Scenic Hillside	x				Project design
Mattos Dairy	866	2	Farms & Ranches	x				Project design
McClelland Dairy	337	2	Farms & Ranches	x	x			On hold at request of owner
McCullough - Phase 2	259	1	Recreation & Education	x	x			On hold at request of owner
Ranchero Mark West	120	1	Recreation & Education	x	x	x	x	Closed escrow April 8, 2016
Rips Redwoods	1,850	5	Water, Wildlife & Natural Areas	x				CE under negotiation
Sonoma Developmental Ctr V (Transforma	945	1	Greenbelts & Scenic Hillside					Resource assessment underway
Spring Hill Ranch	313	1	Farms & Ranches	x				On hold at request of owner
Stewarts Point Ranch	871	5	Water, Wildlife & Natural Areas	x	x	x		Fiscal Oversight Commission reviewed 4/7/16

Total Acres: 14,395

Matching Grant Projects	Acreage (approximate)	Supervisory District	Location	Begin Grant Process	Appraisal Process	Approvals/Baseline	Escrow	Comments
Bayer Farm Site Development	6**	5	Southwest Santa Rosa	x	x	x	x	Reimbursement ongoing
Colgan Creek Park and Preserve (Ph 1)	2	5	Southwest Santa Rosa	x	x	x	x	Board approved 1/29/08
Colgan Creek Park and Restoration (Ph 2)	5	5	Southwest Santa Rosa	x	x	x	x	Board approved 4/21/15
Colgan Creek Restoration (Ph 3)	7	5	Southwest Santa Rosa	x	n/a	x	x	Board approved 4/21/15
Crane Creek Regional Trail	6	1	East of Rohnert Park	x	n/a			Advisory Committee accepted project 6/28/07
Creekside Park, Phase 1A	4**	5	Monte Rio	x	n/a	x	x	Reimbursement ongoing
Denman Reach Phase 3	2	2	North Petaluma	x				Drafting documents
East Washington Park	25	2	Northeast Petaluma	x	n/a	x		scheduled for Board approval May 24th
Falletti Ranch	4	2	Cotati	x	x	x	x	Tracking match
Forever Forestville	4	5	Downtown Forestville	x	x	x	x	Tracking match
Guerneville River Park, Phase 2	5	5	Central Guerneville	x	x	x		FOC approved 1/9/14
Irwin Creek Riparian Restoration	47**	5	West of Santa Rosa	x	n/a		n/a	scheduled for FOC May 5th
Moorland Park	4	5	Southwest Santa Rosa	x				Initiating project
MRRP-Meadowlark Field	58	5	Sebastopol	x	x	x	x	Reimbursement ongoing
Nathanson Creek Preserve Restoration	1**	1	Sonoma	x	n/a			Drafting documents
Paula Lane OSP	11	2	West Petaluma	x	x	x	x	Tracking match
Patterson Point	2	5	Villa Grande	x	x	x	x	Reimbursement ongoing
Roseland Village Public Space	1	5	Southwest Santa Rosa	x				Initiating project
Sebastopol Skategarden Expansion	1	5	Sebastopol	x	n/a			FOC approved 11/12/15, BOD approved 12/15/15
SMART Pathway – Hearn to Bellevue	6	5	Southwest Santa Rosa	x	n/a			Negotiations
SMART Pathway - Payran to S. Point	14	2	Petaluma	x				Initiating project
Sonoma Garden Park, Phase 2	5**	1	East of Sonoma	x	n/a	x	n/a	Reimbursement ongoing
Total Acres:	157							

** Restoration/Development Project on previous acquisition.