



# Agenda for Tonight

- 6:00 - 6:20**      *Welcome & Founders Film*
- 6:20 - 6:40**      *District Overview & Planning Process*
- 6:40 - 7:30**      *Small Group Discussions*
- 7:30 - 8:00**      *Gallery Walk & Listening Stations*
- 8:00**              *Adjourn*



**District Founders (1990)**



# District Overview & Planning Process

- **Background: Ag & Open Space District**
- **Accomplishments since 1990**
- **Vital Lands Initiative: planning process**



# Foundation + Guiding Policies

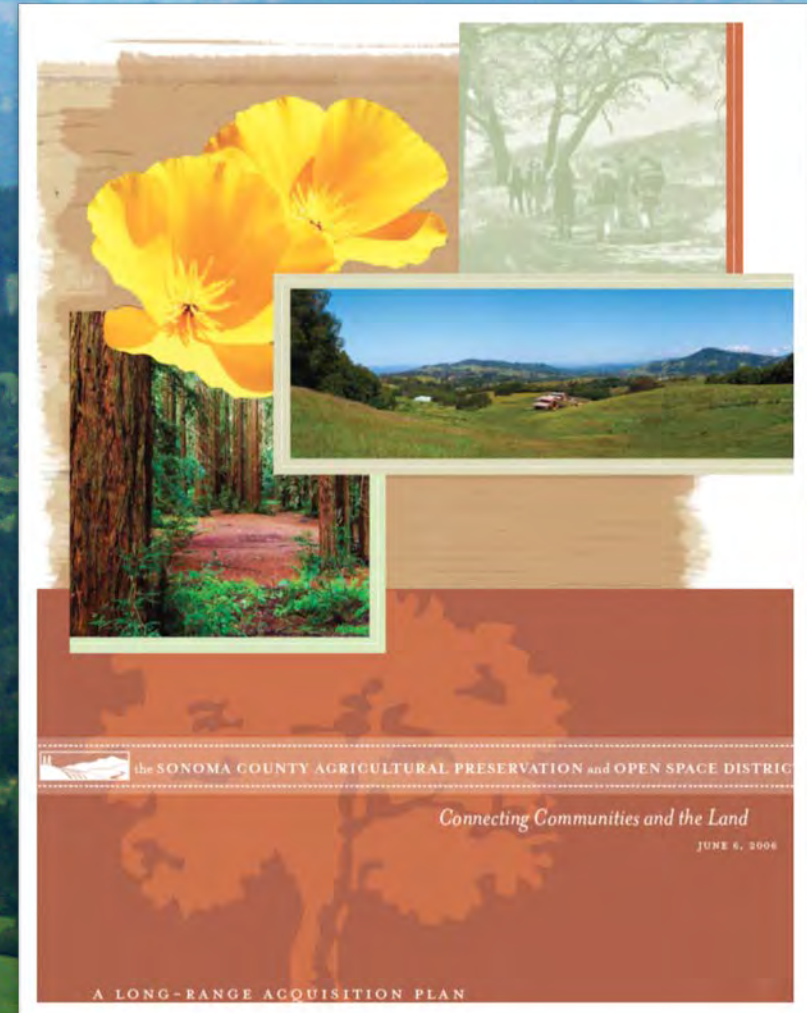
- **Visionary Founders & Voters of Sonoma County**
  - **Enabling Legislation & Expenditure Plan**
  - **Public Resources Code**
  - **Sonoma County General Plan**
  - **Funding mechanism**
- 
- A group of approximately 15 people, including children and adults, are walking away from the camera across a large, vibrant green field. In the background, a dense forest of tall trees rises under a clear blue sky.



# Foundation + Guiding Policies

## A Foundation of Success:

- Acquisition Plan 2006
- Strategic Plan 2009



A scenic landscape of rolling hills and a winding river, with hikers in the foreground. The text is overlaid on the image.

***The Sonoma County Agricultural Preservation and Open Space District permanently protects the diverse agricultural, natural resource, and scenic open space lands of Sonoma County for future generations.***



# How We Work | *Conservation Easements*

- Voluntary/willing landowners
- Purchase development rights
- Permanent protection
- Community benefits

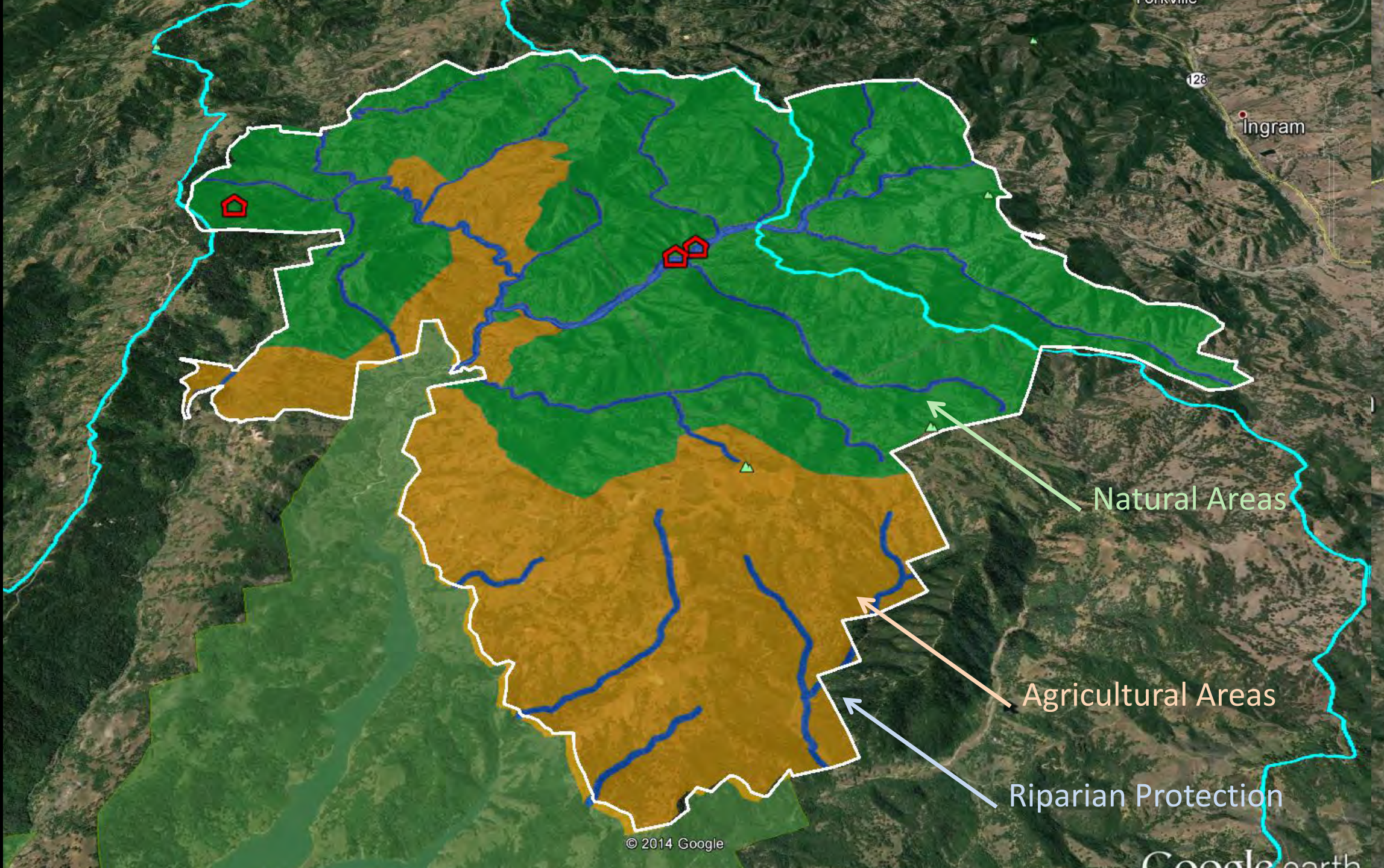
This working farm...

**Protected  
Forever**

SONOMA COUNTY  
AGRICULTURAL PRESERVATION  
AND OPEN SPACE DISTRICT

707-565-7360 [www.sonomaopenspace.org](http://www.sonomaopenspace.org)





128

Ingram

Natural Areas

Agricultural Areas

Riparian Protection

© 2014 Google

Google earth



**106,000**

**Acres**

**231**

**Easements**





# How We Work | *Fee Lands*

- Future parks and preserves
- Small scale agriculture
- Greenbelts
- Cost of fee vs. easements



**21**

**Fee properties**

**5,200**

**Acres**

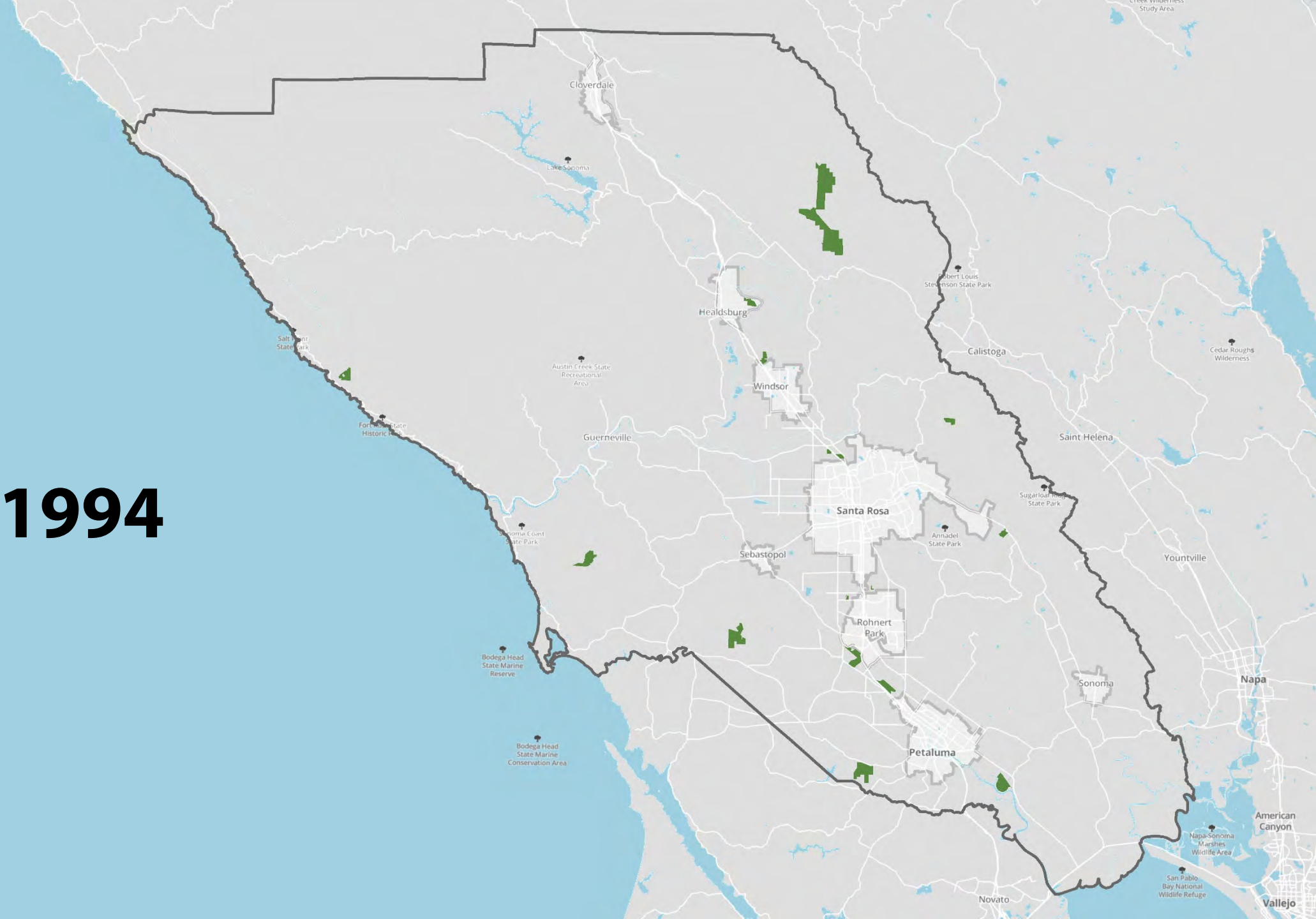


# How We Work | *Perpetuity*

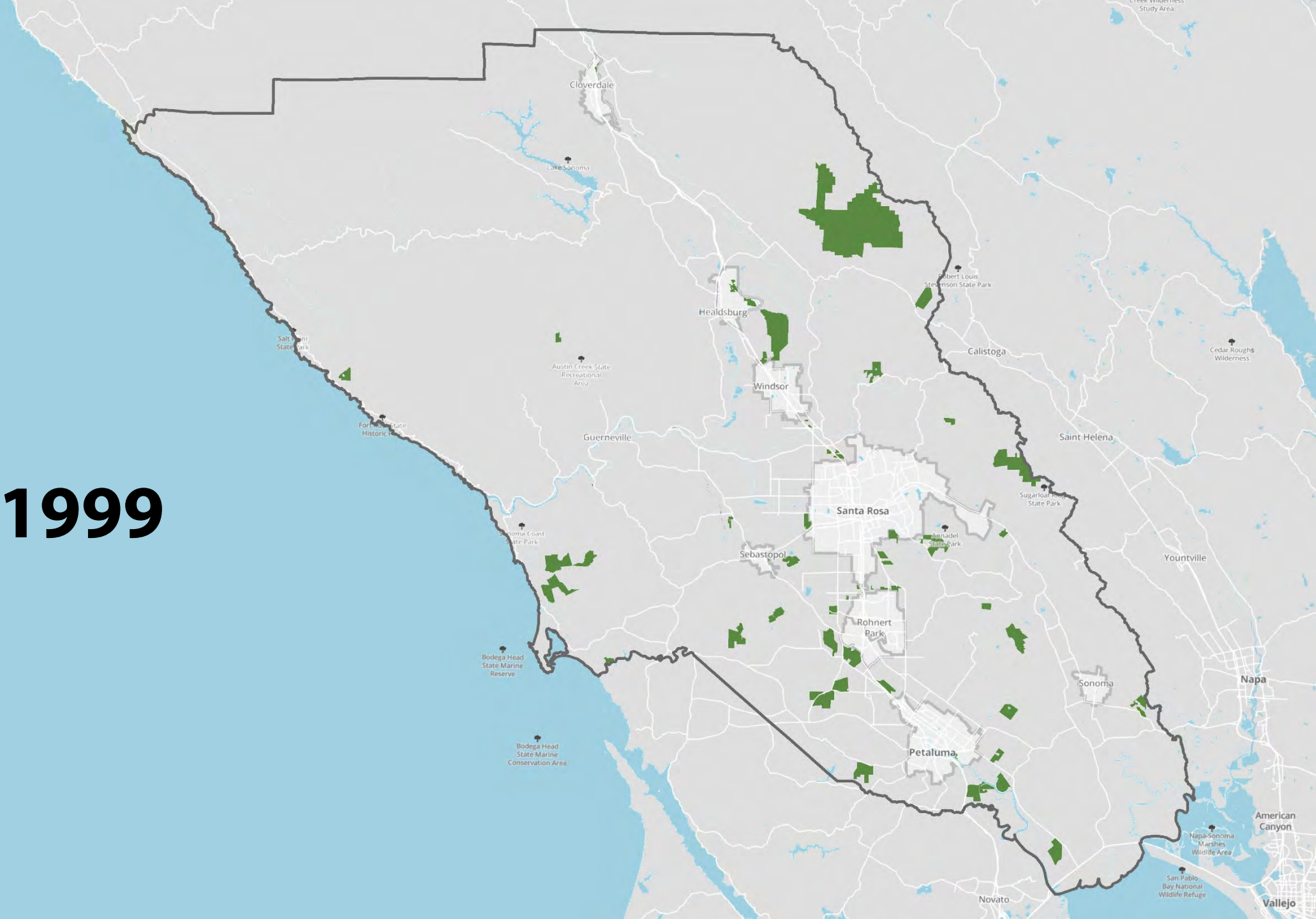


**Forever is a long time...**

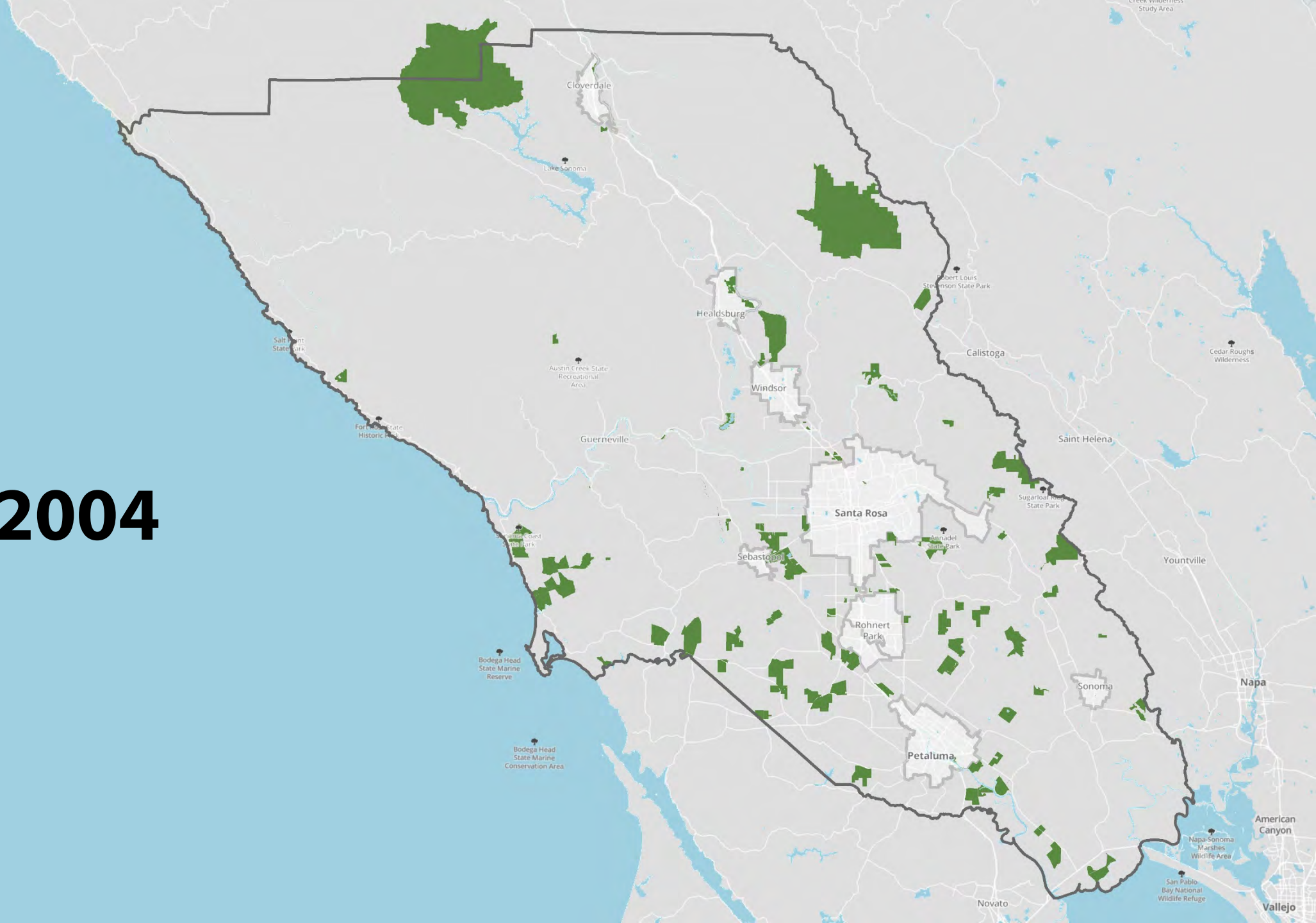
**1990 - 1994**



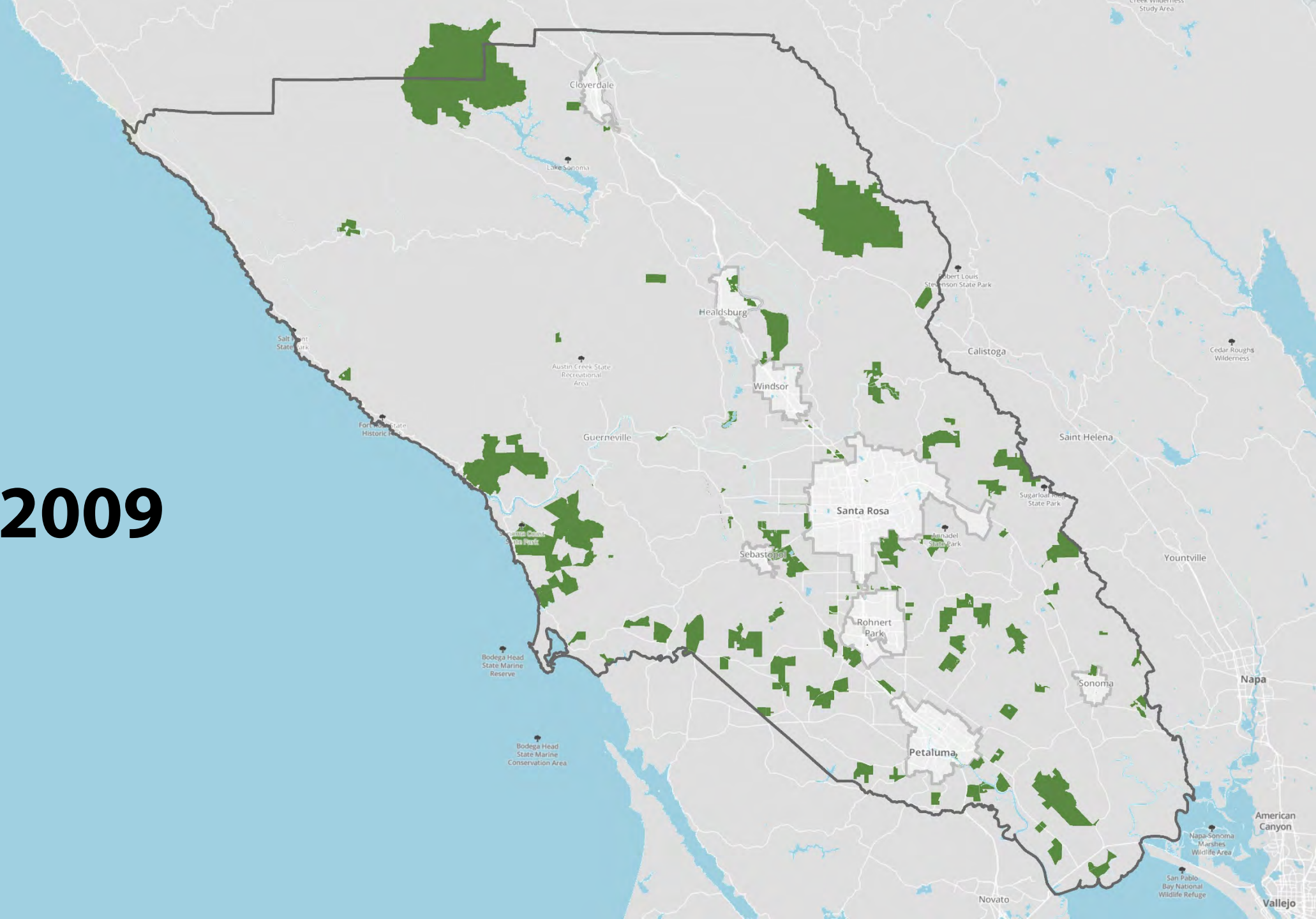
**1995 - 1999**



**2000 - 2004**

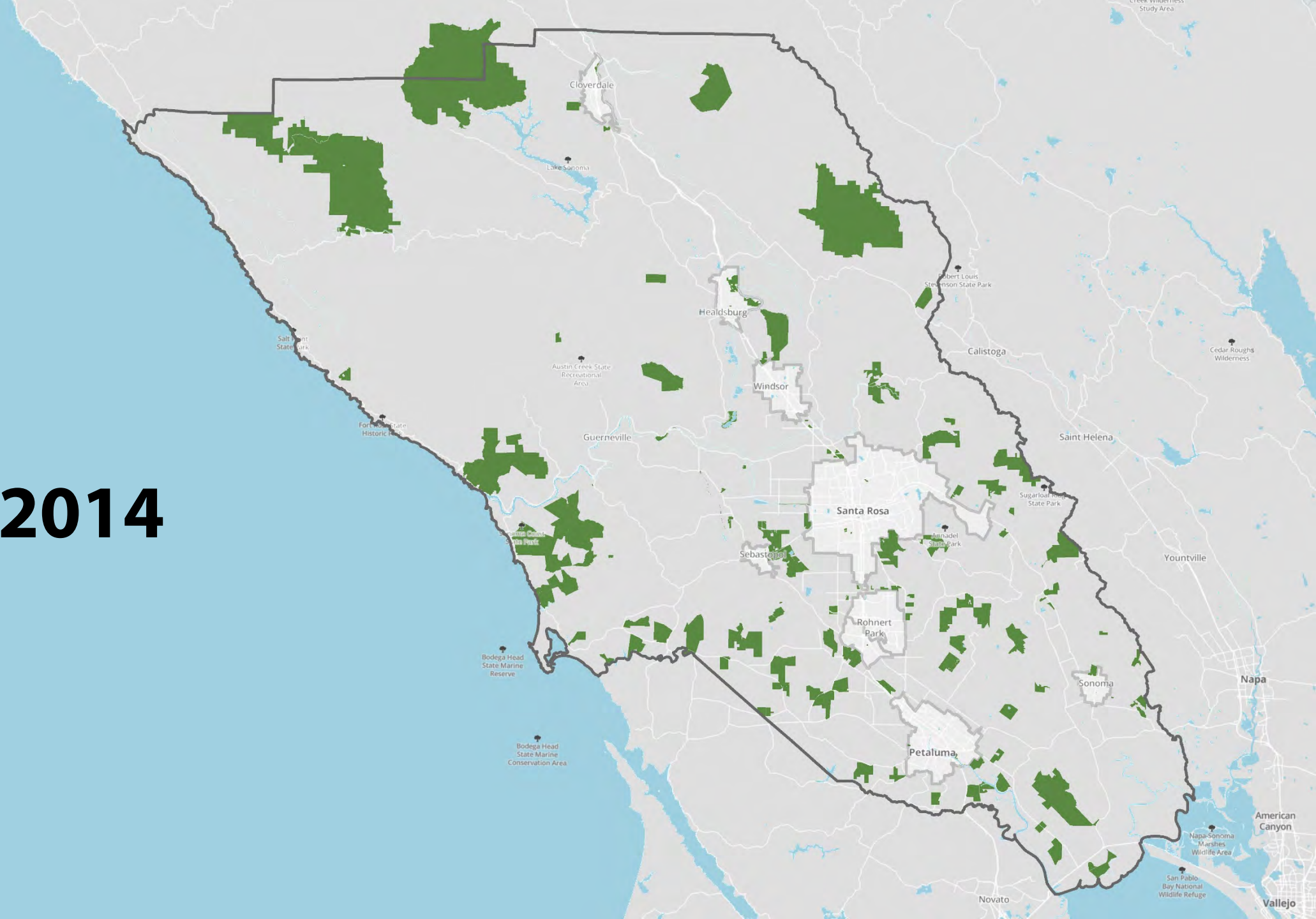


**2004 - 2009**

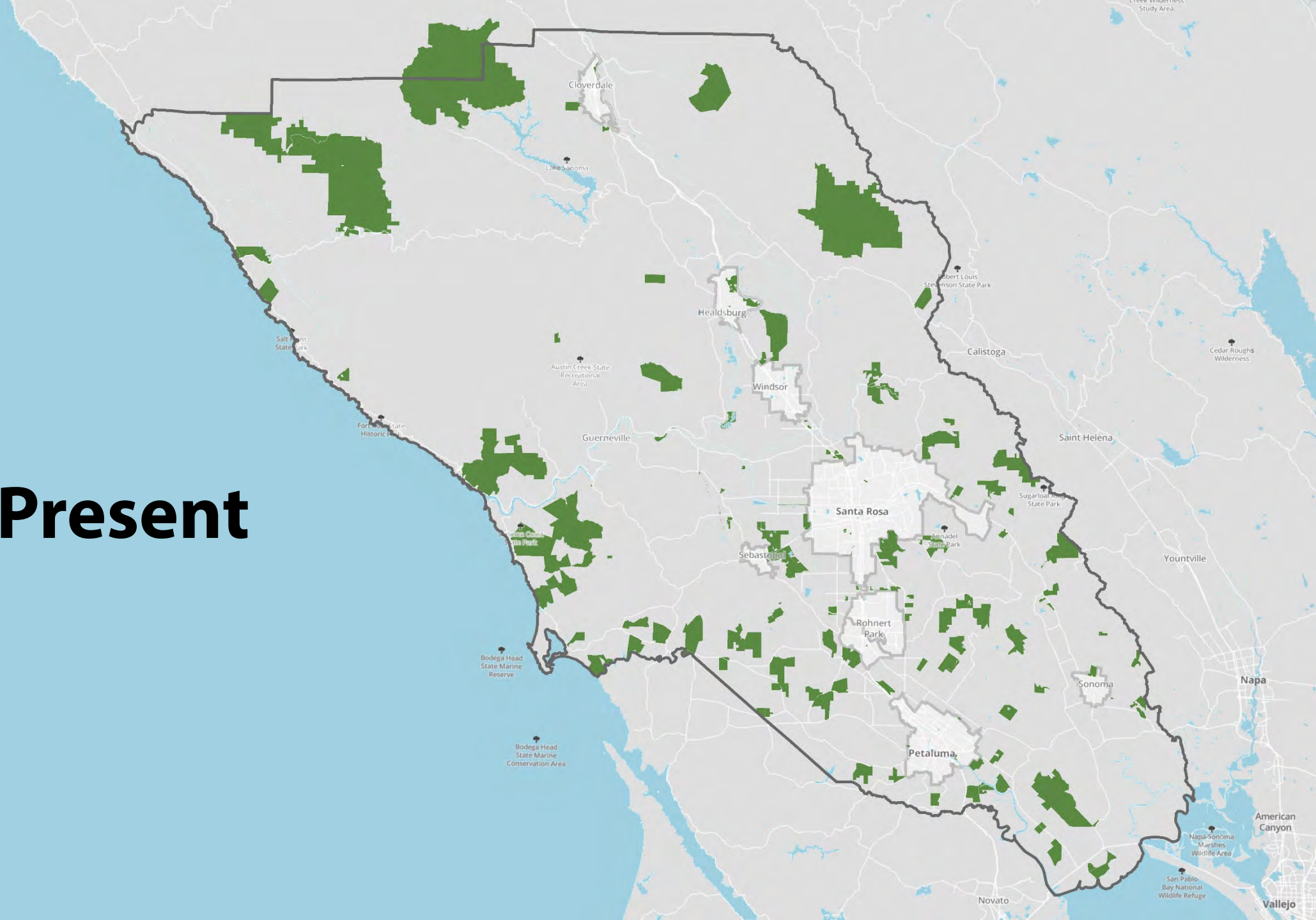




**2010 - 2014**



# 2015 - Present



# **111,200** Acres Protected Forever

*Over 10% of Sonoma County!*



# Number of projects by **primary** acquisition category

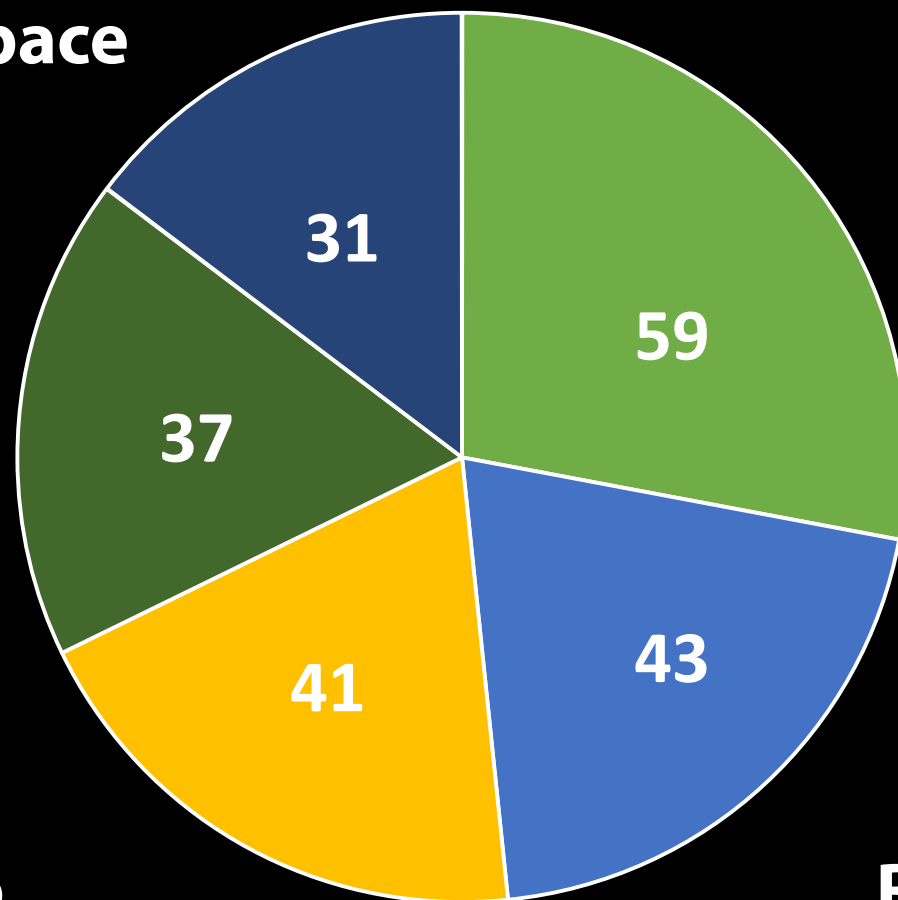
**Urban Open Space**

**Greenbelts**

**Recreation**

**Agriculture**

**Natural  
Resources**





**\$413 million**

Appraised value of protected lands

**\$303 million**

Sales tax dollars spent to acquire natural  
and working lands in Sonoma County

**\$110 million**

Savings to the taxpayers



**\$32 million**

**Dollars pledged  
toward urban  
open space  
projects through  
Matching Grant  
Program**

**52**

**Number of projects  
accepted into the  
Matching Grant Program**

**426**

**Number of acres Matching  
Grant Program  
has opened to the public**





**11,969**

**Acres of  
District-protected  
land open for  
public recreation**

**32**

**New parks, preserves,  
and public spaces  
created**



# 7,350

**Acres added to existing State and Regional Parks**





**18,658**

**Acres of protected groundwater  
basins or natural recharge areas**



**2,797**  
**Acres**  
**of**  
**wetlands**

**31,528** Acres of grazing land





**11,582**

**Acres of coastal lands protected**



**287**

**Educational  
programs  
and outings  
in 2016 with**

**4,892**

**Participants**

**76**

**Miles of  
salmon  
streams**





**38**

**Properties  
producing  
local food  
and wine**



# Wildlife Habitat





**33,579**

**Acres of redwood forest**

**58,853** Acres native oak  
woodland & forest





**5,832**

**Acres habitat for threatened and  
endangered plants & animals**

A square graphic with a black border containing a blue topographic map pattern. In the center is a white square with the text "SONOMA CO VITAL LANDS INITIATIVE" in black, bold, sans-serif font.

SONOMA CO  
**VITAL  
LANDS**  
INITIATIVE

A wide-angle photograph of a green field with a large flock of sheep grazing. The background shows rolling hills under a blue sky with scattered white clouds.

*Building on a foundation of success.*



# Vital Lands Initiative | *Plan Overview*

- **Goals & objectives**
- **Strategies for land conservation**
- **Priorities for land conservation**
- **Threats to agriculture & open space lands**
- **Outcomes on the land**
- **Measure performance**



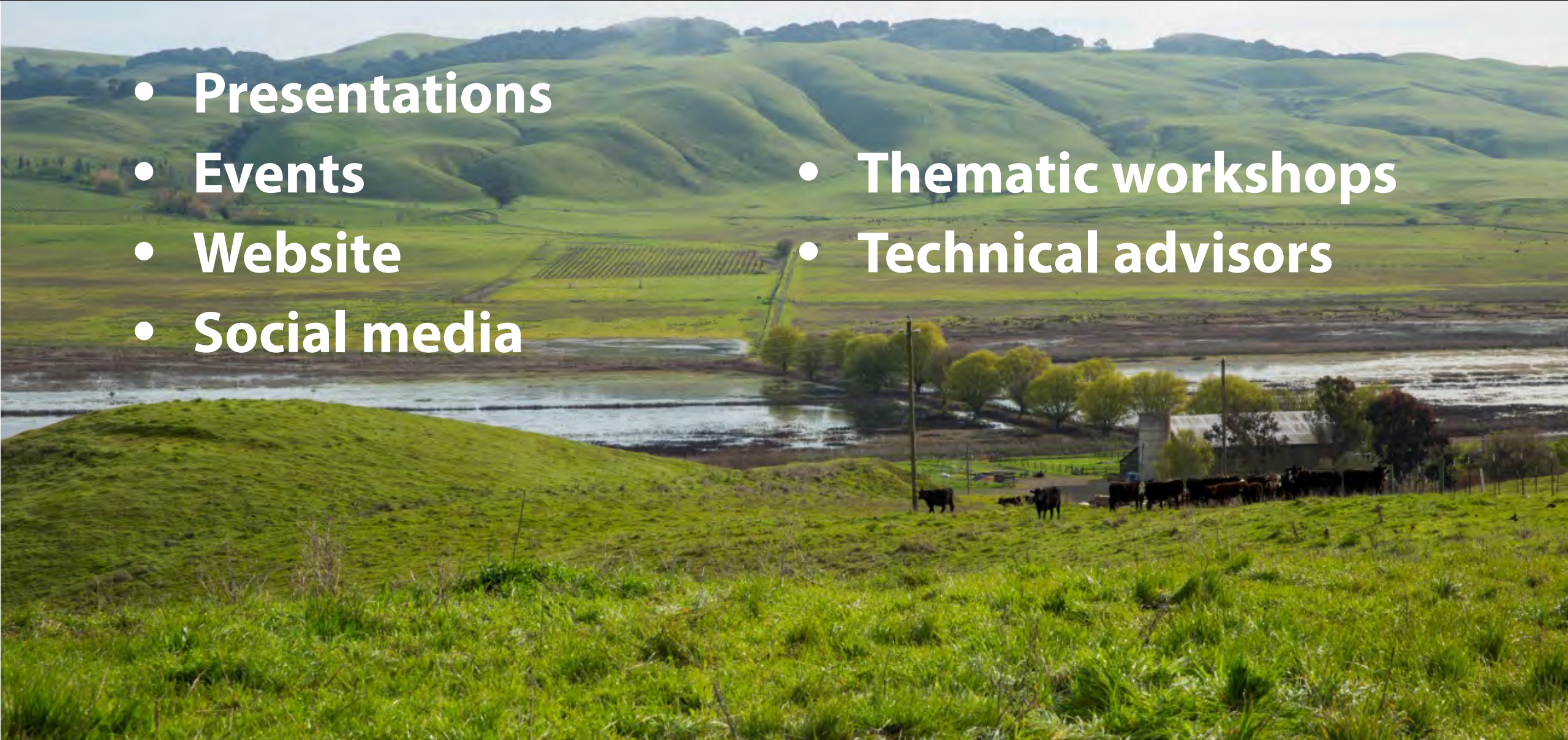
# Vital Lands Initiative | *Plan Overview*

- Science and data driven
- Community review at each step
- Digital: Adaptive, update as needed
- Summer:
  - ✓ Draft plan
  - ✓ Board-led community workshop
- Fall:
  - ✓ Final plan to Board



# Vital Lands Initiative | *Plan Overview*

- Presentations
- Events
- Website
- Social media
- Thematic workshops
- Technical advisors





# Community Meetings | 6-8pm



**March 14: Healdsburg - *Healdsburg Community Center***

**March 15: Forestville - *El Molino High School Library***

**March 21: Petaluma - *Petaluma Community Center***

**TONIGHT: Santa Rosa - *Santa Rosa Veterans Building***

**March 30: Sonoma - *Finnish American Heritage Hall***



# Next Steps | *Community Input Process*



- Next series of meetings
- Opportunities for input
- Sign up at exit table
- Sign up on website
- Call or email us anytime
- Thank you!

[sonomaopenspace.org/vital-lands](https://sonomaopenspace.org/vital-lands)



# Input Activities



- **Small group facilitated discussions**
- **Gallery walk and listening stations**
- **Ground rules**



# Small Groups

- **Introduce yourself!**
- **What is your favorite thing about Sonoma County?**
- **What do you think is the most important to focus on?**
- **What landscapes are most important to protect?**
- **What is threatening these landscapes?**
- **What can be done about this?**



# Gallery Walk + Listening stations

- **Self-guided tour of stations**
- **Provide input**
- **Discuss with District staff**

