

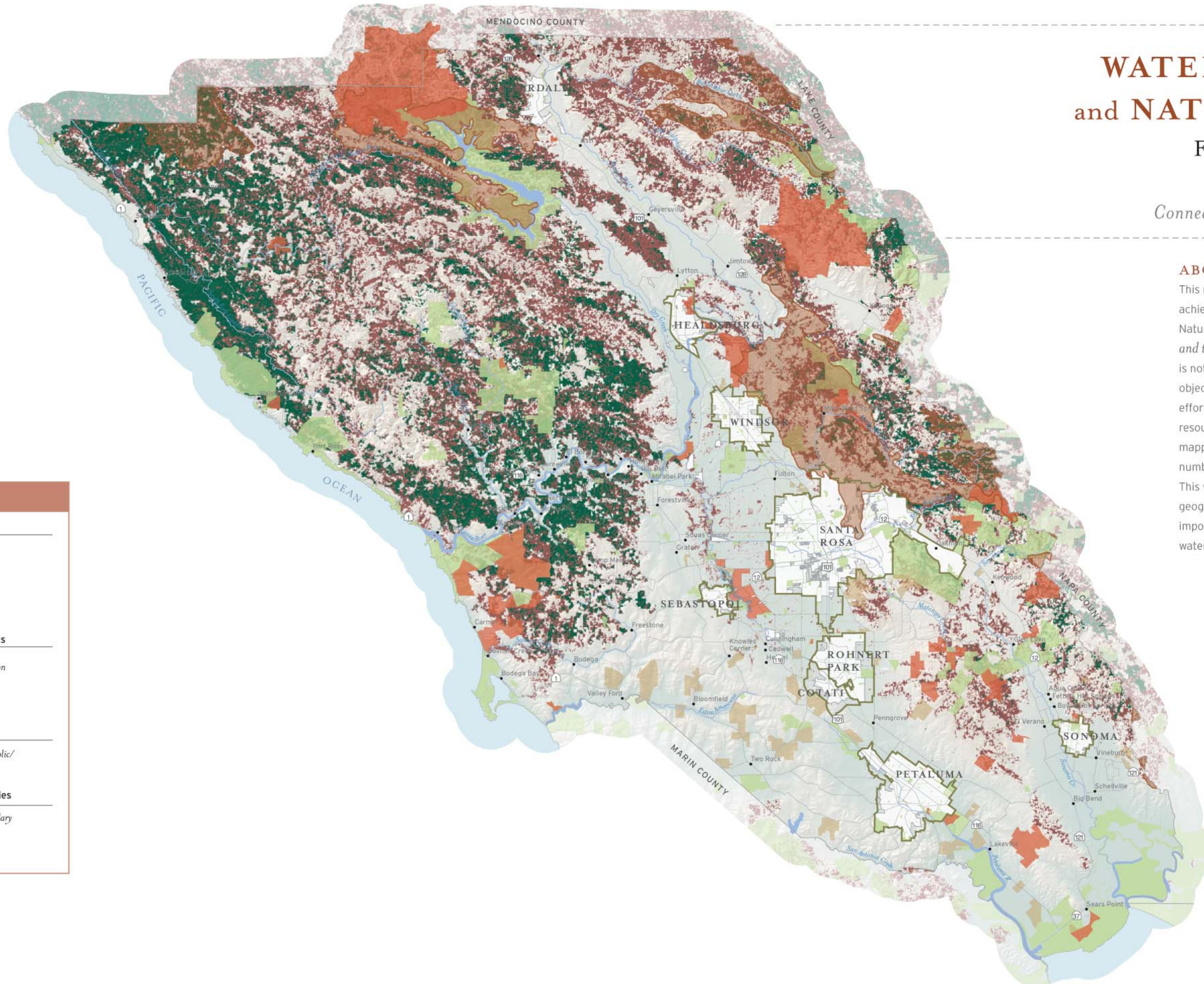
# WATER, WILDLIFE and NATURAL AREAS

Forests, Oak Woodlands,  
and Species Rich Areas

*Connecting Communities and the Land*

## ABOUT THIS MAP

This map illustrates resources important to achieving the objectives of the Water, Wildlife and Natural Areas section of *Connecting Communities and the Land: A Long-Range Acquisition Plan*. It is not intended for use without the associated objectives and policies. The District will focus future efforts on protecting areas that have the highest resource values, including those that have multiple mapped resources, provide connected habitat for a number of species, and/or are highly threatened. This work will include additional research in geographic areas to determine which are most important for maintaining diverse natural areas, water resources and connected wildlife habitat.



## LEGEND

- District Focus Areas**
  - Core Oak Woodland
  - Core Conifer Forestland
  - Species Rich Area
- District Holdings and Projects**
  - Natural Resource Protection
  - Other Project
- Public/Protected Land**
  - Federal, State or Local Public/Protected Land
- City Administrative Boundaries**
  - City Urban Growth Boundary
  - City Limit