

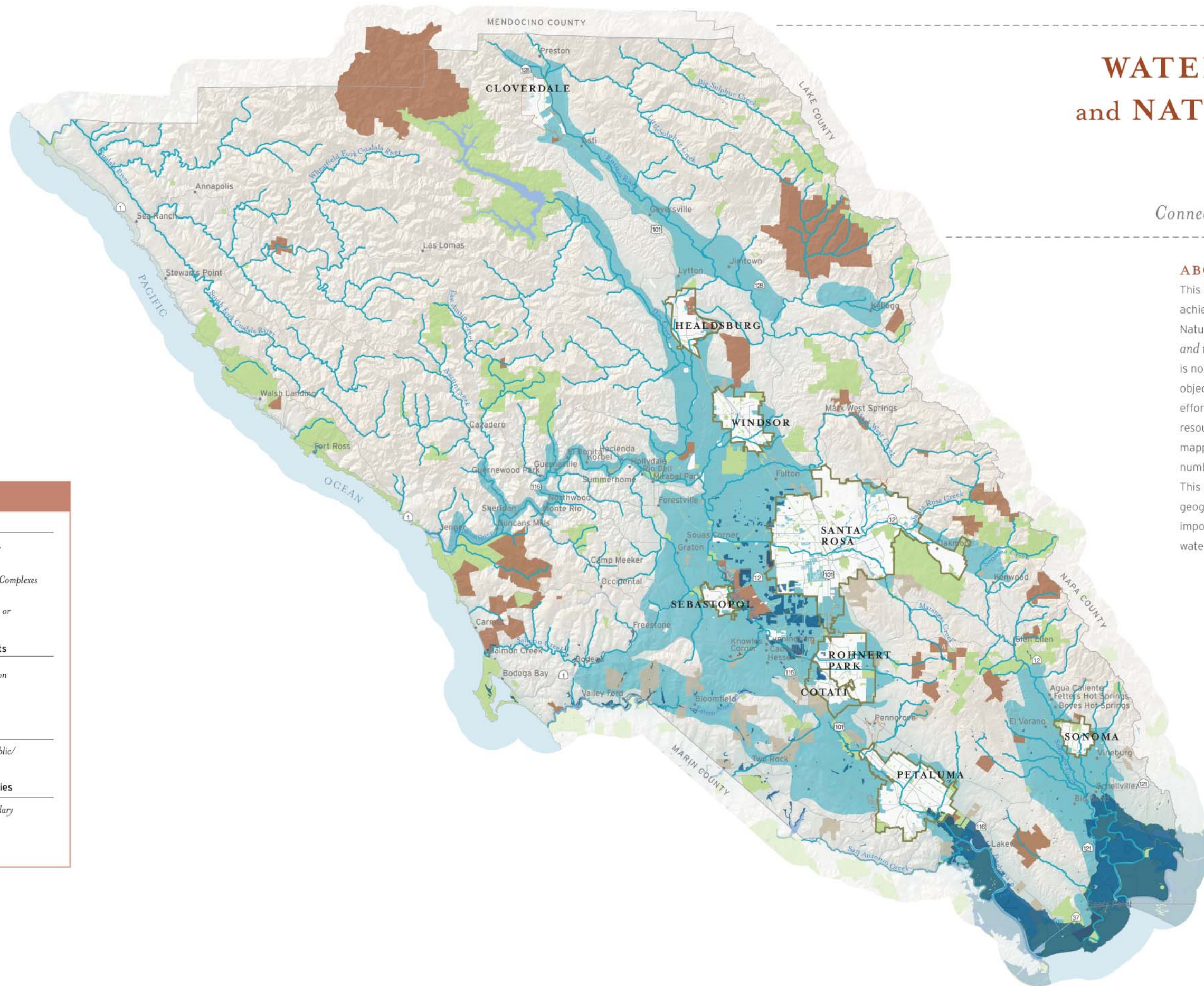
WATER, WILDLIFE and NATURAL AREAS

Aquatic Resources
and Water Benefits

Connecting Communities and the Land


ABOUT THIS MAP

This map illustrates resources important to achieving the objectives of the Water, Wildlife and Natural Areas section of *Connecting Communities and the Land: A Long-Range Acquisition Plan*. It is not intended for use without the associated objectives and policies. The District will focus future efforts on protecting areas that have the highest resource values, including those that have multiple mapped resources, provide connected habitat for a number of species, and/or are highly threatened. This work will include additional research in geographic areas to determine which are most important for maintaining diverse natural areas, water resources and connected wildlife habitat.





LEGEND


Revision 2005 Priorities

-  Priority Riparian Corridor
-  Wetlands and Vernal Pool Complexes
-  Major Groundwater Basin or Natural Recharge Area



District Holdings and Projects

-  Natural Resource Protection
-  Other Project

Public/Protected Land

-  Federal, State or Local Public/Protected Land

City Administrative Boundaries

-  City Urban Growth Boundary
-  City Limit